

## Immediate ROI

- Reduces cost of maintaining multiple design software packages and eliminates version control and backward compatibility issues common to design teams.

- Reduces travel costs, as geographically dispersed team members can meet in online review sessions.

More centralized communication – cut

- down on fax, phone, e-mail, courier.

Ability to store and retrieve both

- structured (documents) as well as ad-hoc ideas (meetings).

View and comment on documents

- stored within an ECM without buying the originating application.

Can be customized to fit the exact use-

- case in an organization.

Provides significant competitive edge

- over outdated inefficient.

Better quality control by detecting

- problems early and involvement of all players – customers, contractors, suppliers and entire team in real-time decision binding meetings, or in structured asynchronous review processes.

Cross platform, Server centric

- solution—runs on all flavors of UNIX, Windows, Sun-Solaris and Red-Hat LINUX and MAC-OS/X.

Comes ready with a web server which

- is installed along with eReview during installation, however, works with all Web Servers and Web Application Servers, such as MS-IIS, Java Web Server, Apache, Web Logic and Web Sphere to name a few.

Real-time capabilities substantially

- reduce time and man hours in product lifecycle.

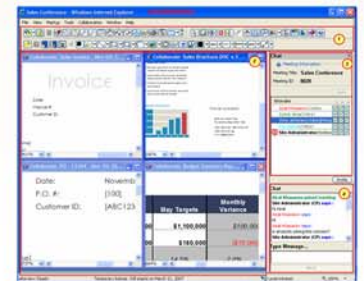
## Why eReview?

**eReview** allows you to view and markup many different types of documents and drawings without having or using the application that created them. Markups and annotations are non-destructive; i.e., the original document is never changed; rather, the markups, annotations and comments are saved in a corollary file, providing a history of suggested changes. This process prevents uncontrolled changes to a document/drawing while protecting the integrity of the document/drawing under review. Collaboration simplifies and enhances the review process. What used to be sequential, time consuming and difficult to accomplish is now intuitive, natural, and in real-time within a fully collaborative Web environment. Real-time collaboration saves time, money, travel, and allows better and quicker decisions.

- Combination of Web-based view and markup with collaboration and conferencing tools.
- A simple, easy-to-use interface.
- An unlimited number of attendees.
- Anywhere anytime access.
- Both stand-alone and collaborative modes.
- True Web-based power with no fat clients for the user to download.
- A server-based application accessed via the Internet that eliminates the need to install, manage, update and support many desktop solutions.
- A true firewall-friendly environment for the Internet, intranets and extranets.
- Powerful and intuitive viewing and annotation tools. Annotations (markups) can be shared between the desktop (ForReview) and server-based (eReview) solutions. Integration with any legacy system, or with document management, product data management, ERP, MRP or CRM products for easy collaborative Web-based reviews.

1290 N Hancock St. Suite 202  
Anaheim Hills, CA 92807  
T 714 974 2670  
F 714 974 1342

[info@ereviewonline.com](mailto:info@ereviewonline.com)  
[www.bpoms.com](http://www.bpoms.com)



## Key Features:

### Enhanced viewing and reviewing of hundreds of formats

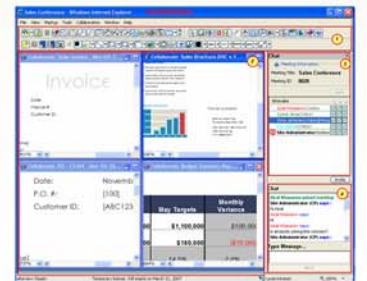
- Pan, zoom, and rotate and overview window (bird's eye view).
- Powerful comparison tools: Side-by-Side compare/tiling overlay feature etc.
- Server based and accelerator viewing provided.
- Open files for viewing from the eReview vault, from the desktop or from any integrated document management or repository.
- Open files in either roaming (local) or collaborative modes (default).
- Open files in preview mode for slow speed connections.
- Large tiff files handled with tremendous viewing speed achieved through fast tiff viewing technology.
- Optionally view documents in read-only mode.
- Reduce training costs by presetting the same interface for viewing and markup of hundreds of formats.
- Secured viewing. 128-bit SSL (https) support.
- Compare/tile multiple documents side-by-side.
- Compare/overlay documents of any formats supported.
- Offline, desktop-based viewing without connected to the server.
- More formats supported (see the list of supported file formats).
- View and markup MS-Office formats in non-windows environments.
- Support for CMYK colors for raster formats.
- Enhanced and better PDF viewing by supporting PDF bookmarks.

### Markups and annotations

- Very easy-to-use and intuitive markup/annotation tools.
- Multi-layered and multi-author markup paradigm.
- Intelligent markups retain the information about the authors.
- Improved markup paradigm.
- Add textual comments for all graphical markups.
- Comment on documents through easy-to-use, threaded comment markups.
- Multiple users can add their comments anywhere on the documents that get saved as threaded comments, providing history of all discussions.
- Exchange markups across documents of different types.
- Copy-paste of markups across document types.
- With a click, see the authors of markups.
- Iconize annotations for ease of viewing.
- Add overall comments to be seen by all users at any time.
- Redaction through external API parameter.

1290 N Hancock St. Suite 202  
Anaheim Hills, CA 92807  
T 714 974 2670  
F 714 974 1342

info@ereviewonline.com  
www.bpoms.com

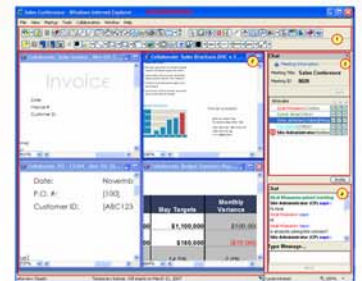


## **Powerful Document centric Collaboration(synchronous and Asynchronous):**

- Share, conference, view and markup documents in real-time True Web-based, cross platform, server-centric solution.
- Provides a true Multiple Document Interface (MDI).
- Instant switching between real-time collaborative reviewing and individual reviewing.
- Asynchronously review document in a workflow among a group of users, physically dispersed across the globe.
- Offers real-time sharing of documents, data as well as chat and whiteboard under one simple-to-use interface.
- Audio conferencing tools within the same document-sharing environment to facilitate effortless audio communication.
- Desktop and application sharing features present.
- All events of the meetings can be saved and replayed back.
- History saved as XML file, saving disk space on the servers.
- Restore saved meetings from the XML files.
- Webcasting: Passive meeting members can participate in a meeting in a Webcasting session of ongoing meetings.
- Threaded discussions/chat on a portion of the documents.
- Chairperson can schedule meetings, invite attendees, end meetings, and assign/remove privileges to each attendee.
- eReview meetings can be effectively managed through the eReview Messenger Application that can be easily integrated with an existing legacy application.

1290 N Hancock St. Suite 202  
Anaheim Hills, CA 92807  
T 714 974 2670  
F 714 974 1342

info@ereviewonline.com  
www.bpoms.com



## **Powerful Printing Solution**

- WYSIWYG Printing.
- Multi-page, multiple document printing.
- Printing Header, footer and watermarks.
- Printing with or without annotations.
- Options to print using local print drivers.
- Printing 3D model snapshots.

## **Simple, easy-to-use navigational and Search controls**

- Easy-to-use, simple, explorer-like navigation controls to navigate documents, pages within documents and even markups/annotations.
- Navigate between all pages or only pages with annotations with a click.
- Get instant, on-the-fly summary of all comments/annotations within a collaborative session.
- See instant information about comments, documents, and pages within a document-review.

- Search annotations based on time.
- Full-text search capabilities on text-based documents.
- Toggle between annotations made by specific users.
- Search annotations within pages of documents.

1290 N Hancock St. Suite 202  
Anaheim Hills, CA 92807  
T 714 974 2670  
F 714 974 1342

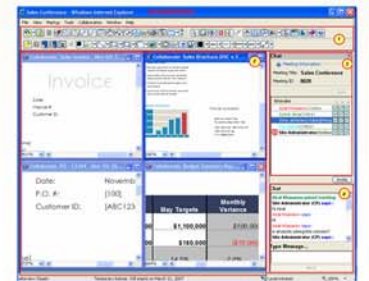
info@ereviewonline.com  
www.bpoms.com

## Modularity

- Full viewing modularity: When viewing different formats, only the required viewing modules load, resulting in a very thin and on-demand applet.
- Thin-client, lightweight java applet with minimum size of 1MB.
- Integrated meeting scheduler.

## Administration Module

- Full-fledged administration module for eReview administrators.
- Server-side parameters can be controlled through "Administration Module" interface.
- Create and modify "User Profiles".
- Set User's Interface (UI), according to the ones saved in "user profiles"
- Create and modify "User Roles". For Example, "Administrators", "Power-users", "General Users" etc.
- Intuitive graphical user interface.
- Customizable color scheme of the graphical user interface.



## Accountability and History Module

- Save files into multiple formats either on server side or locally.
- Save or playback collaborative sessions in a lightweight XML files.
- An already finished session can be restored through history module.



## Roll your own eReview: Customizable graphical user interface (GUI)

- Present toolbars with configurable tools (buttons), according to preferences.
- Configuration parameters are based on XML and are easy to configure.
- Configurable menus and menu options.
- Dock, undock, move or float toolbars.
- Enhance or reduce toolbars by adding or deleting buttons.
- Layout toolbars according to preferences.
- Create new toolbars.
- Create new buttons for new features.
- XML based user-profiles for separate set of users..
- Predefine user-roles with separate set of tools and separate configuration: roles such as "administrators", "power-users" and "users" are default. New user-roles can be created without any programming.

